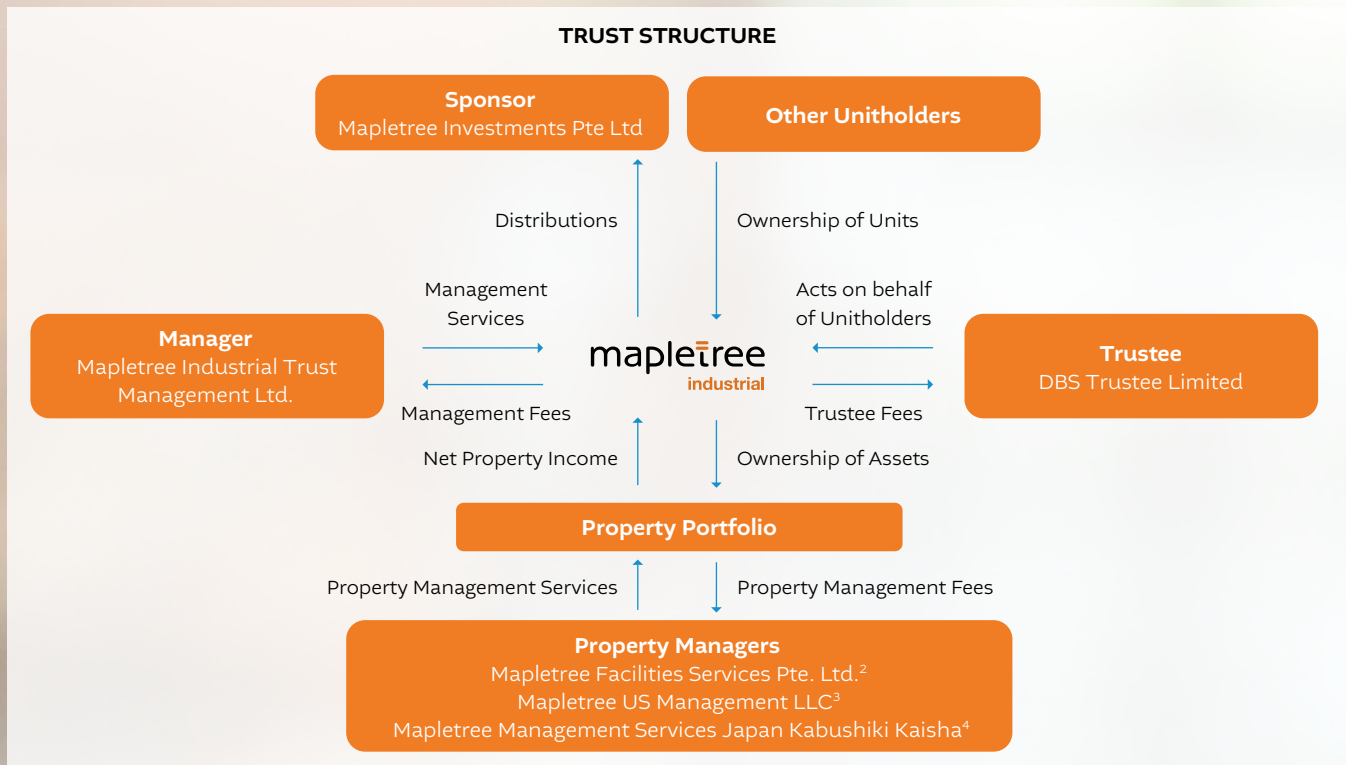
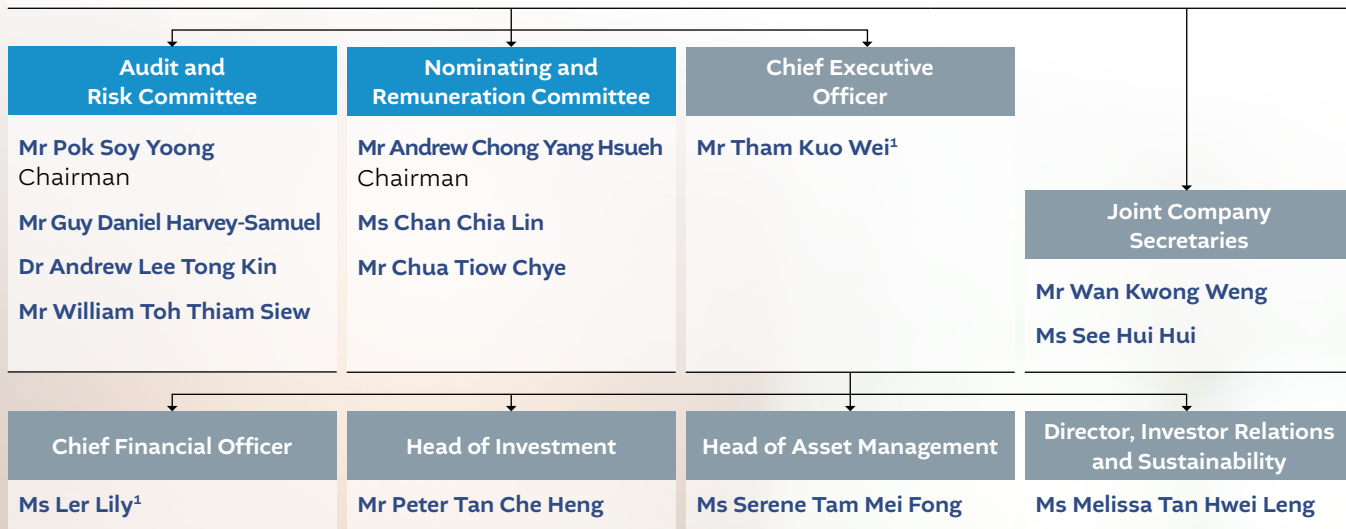


Organisation and Trust Structures

MAPLETREE INDUSTRIAL TRUST MANAGEMENT LTD.

Board of Directors

Mr Cheah Kim Teck Non-Executive Chairman and Director	Mr Guy Daniel Harvey-Samuel Independent Non-Executive Director	Mr Chua Tiow Chye Non-Executive Director
Mr Andrew Chong Yang Hsueh Lead Independent Non-Executive Director	Dr Andrew Lee Tong Kin Independent Non-Executive Director	Ms Wendy Koh Mui Ai Non-Executive Director
Mr Pok Soy Yoong Independent Non-Executive Director	Mr William Toh Thiam Siew Independent Non-Executive Director	Mr Tham Kuo Wei¹ Executive Director and Chief Executive Officer
Ms Chan Chia Lin Independent Non-Executive Director	Ms Noorsurainah Tengah Independent Non-Executive Director	



¹ Mr Tham Kuo Wei will relinquish his role as Chief Executive Officer and Executive Director of the Manager. Ms Ler Lily will relinquish her role as Chief Financial Officer and will assume the role of Chief Executive Officer and Executive Director of the Manager. Ms Khoo Geng Foong will be appointed as the Chief Financial Officer of the Manager. The management changes will take effect from 22 July 2024.

² Industrial properties in Singapore are managed by Mapletree Facilities Services Pte. Ltd., a wholly-owned subsidiary of the Sponsor.

³ Data centres in North America are managed by Mapletree US Management LLC, a wholly-owned subsidiary of the Sponsor.

⁴ The Osaka Data Centre is managed by Mapletree Management Services Japan Kabushiki Kaisha, a wholly-owned subsidiary of the Sponsor.